



AMP UP YOUR LIFE

KOKA BOOTH AMPHITHEATRE

2025-2026





KOKA BOOTH AMPHITHEATRE

Cary

Like a secret hideaway tucked in the trees, Koka Booth Amphitheatre is a place apart. On the shores of Symphony Lake, people set up lawn chairs around the glow of a stage that's cradled in the woods. The amphitheater, named for a former Cary mayor, is modern and spacious — it can accommodate 7,000 — but a performance there can feel as down-home and intimate as a backyard concert. Koka Booth has filled warm summer nights with classical music and jazz, bluegrass and rock since it was built in 2001. Yet it fits so naturally into its surroundings that it feels like it's always been there, deeply rooted in the land of the longleaf pine.

Our State

CELEBRATING NORTH CAROLINA

KOKA BOOTH AMPHITHEATRE, CARY

Like a secret hideaway tucked in the trees, Koka Booth Amphitheatre is a place apart. On the shores of Symphony Lake, people set up lawn chairs around the glow of a stage that's cradled in the woods. The Amphitheatre, named for a former Cary Mayor, is modern and spacious - it can accommodate 7,000 - but a performance there can feel as down-home and intimate as a backyard concert. Koka Booth has filled warm summers nights with classical music and jazz, bluegrass and rock since it was built in 2001. Yet it fits so naturally into its surrounding that it feels like it's always been there, deeply rooted in the land of the longleaf pine.

Our State
July '21

Photo Credits: Robert Benson Photography and William Rawn Associates







GENERAL INFO

Season: April 1st - January 31st
Curfew: Weekdays 10pm;
Weekends 11pm

CAPACITY LIMITS

7,000 seats total
1,048 RSVD + 5,768 GA + 184 COVERED VIP

STAGE

Stage Size: 70'x 45' - 70' maximum width at widest point DSE, 45' maximum depth, 50' wide at up stage edge. All wooden stage - No Pyrotechnics. Confetti is discouraged. Stage steps down to house. Crowd control barricade available.

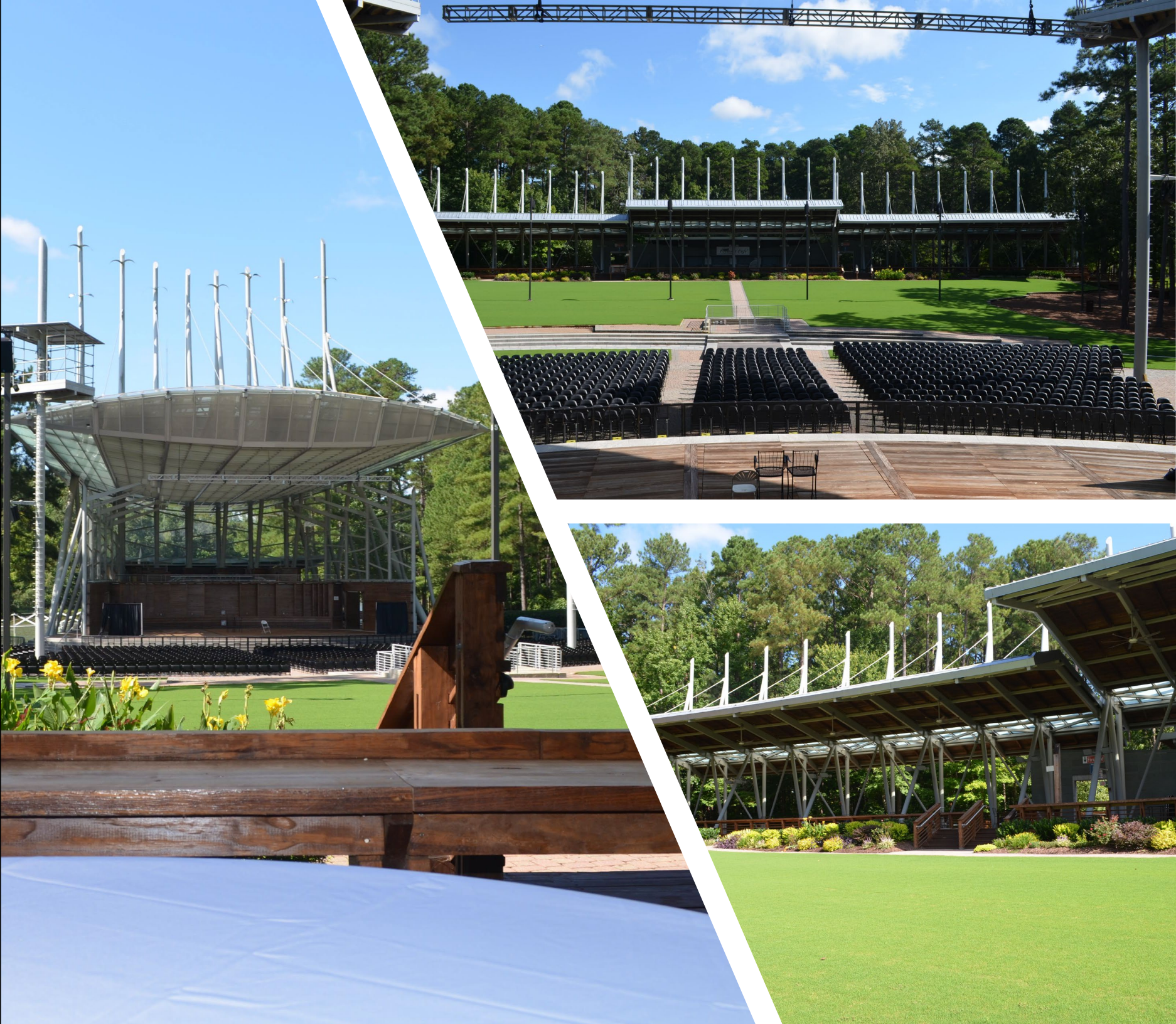
MIX POSITION

- 16' x 16' footprint located 90' from down
- stage edge- centered
- Audio & Lighting snake run to front of house is approximately 175'. Above ground layout along security fencing.

SOUND

House Sound System

- In 2021 Koka Booth Amphitheatre installed a new, state-of-the-art sound system. Our advanced multi-purpose Assisted Listening System will accommodate several receivers for our guests that need hearing assistance.
- An Electro-Voice X-Line Advanced line array in a flown LR configuration is coupled with a flown center cardioid bass array.



House Sound System (con't)

This core system is supplemented with down firing front fills, stage deployed LCR front fills, delay speakers in the far house right area, and distributed speakers along the Crescent Deck ceiling which can be operated independently of the main PA. There are also 6 low profile coaxial stage monitors on independent mixes.

System Specifics:

- 10 - EV X11-212/90-FGB (Mains)
 - 3 - EV X121-128-FGB (Subwoofers;Cardioid)
 - 3 - EV EVF1122D94FBL-B (Down Fill)
 - 6 - EV EVC-1082-96B (Front Fill)
 - 6 - EV MFX-12MC-B 12" low profile coaxial (Stage Monitors)
 - 2 - EVF1122D94FBL boxes (VIP Area)
 - 6 - EV EVC-1082-96PIB loudspeakers (Crescent)
-
- Town of Cary Sound Guideline: Booth Amphitheatre restricts audio levels at all events to 95 dBA SPL (measured 100' from the stage)
-
- ### POWER
- (1) 150 Amp, 3 Phase Panel with Camlock Disconnect
 - (1) 175 Amp, 3 Phase Panel with Camlock Disconnect
 - 100' of feeder required from stage left to panels
 - (2) 400 Amp, 3Phase Panels with Camlock - panels located 150 feet from stage right In basement
 - Note: 100 and 150 Ampnsystems are separate from the two 400 Amp systems.







ARTIST EXPERIENCE

DRESSING ROOMS

- (2) Star dressing rooms w/private restrooms and showers behind the stage (stage right & left).
Additional artist accommodations with adjacent men's and women's restrooms and showers downstairs of venue.

DINING

- Meals are served in a large dining tent directly behind the stage house overlooking beautiful Symphony Lake.
Mobile kitchens are used with a festival type set-up for food preparation and dishwashing.

BAND LOUNGE

- Already equipped with tables, chairs, couches and wi-fi, we are also able to create a custom hidden oasis for the artist(s) to lounge and relax in style.

PRODUCTION

- One production office is located in the center hallway directly behind the stage. An additional production office are located downstairs in the venue for convenience.

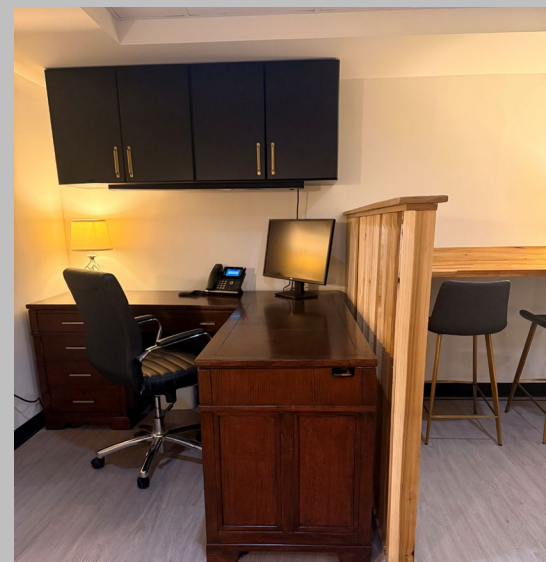
PARKING

- Parking for 3 Tractor Trailers and 5 Buses is available adjacent to the backstage entrance.
- Self-leveling loading dock located behind the stage house with easy stage access (40' flat push to stage). 2nd truck can be loaded simultaneously with ramp or forklift.





PRODUCTION OFFICE



BAND LOUNGE



ARTIST ACCESS TO



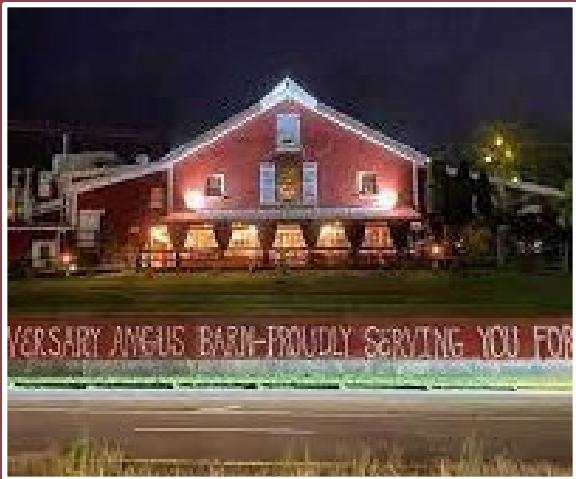
LONNIE POOLE GOLF COURSE - 10 miles

With breathtaking views of the Raleigh Skyline... the Arnold Palmer designed course has become a favorite in the golf community.



UMSTEAD HOTEL - 12 miles

When the time comes to indulge and let go...the Umstead Hotel and Spa are soothing sanctuaries in the heart of the Raleigh, Durham, and Chapel Hill Triangle.



ANGUS BARN - 22 miles

A sprawling upscale steakhouse in a barnlike setting with an opulent wine cellar, lounge & cigar bar.



PINEHURST RESORT - 62 miles

Anchor site of the U.S. Open, challenge your game on nine courses at the Cradle of American Golf, where it has been played for over 125 years.



NORTH CAROLINA MUSEUM OF ART - 10 miles

Unique glass-walled architectural structure with striking roof lines, NCMA is one of the country's premier art museums.



RALEIGH-DURHAM INTERNATIONAL AIRPORT - 19 miles

Locally known by its code, RDU is the main airport service for Raleigh, Durham and the surrounding world-renowned Research Triangle region of North Carolina.



LIFE TIME CARY - 0.8 miles

More than a gym, it's a luxury athletic resort... 110,000 stunning square feet, all dedicated to the pursuit of healthy living.



THE FAN EXPERIENCE

LOWES FOODS FRONT PORCH & COBBLESTONE COURTYARD

Food and Beverage locations serve all your favorite venue foods. Our bars are stocked with a wide variety of top shelf spirits and local craft beers and wine.

PICNIC IN THE PARK

Our guests may pre-order with easy pickup delicious treats from a variety of food items provided by our food and beverage partners.

LOWES FOODS FRONT PORCH

The Lowes Food Front Porch offers comfortable table seating with first class waitstaff service. Sit comfortably on our covered deck while ceiling fans create a gentle breeze. Steps away from concession stands and restrooms, the Lowes Food Front Porch is the perfect seating location to craft a party at any event.

BEST SEATS IN THE HOUSE

Let us create a Best Seats in the House turnkey promotion for you. Along with an array of food & beverage options to choose from, up to 2 winners plus guests can enjoy an event in beautiful Adirondack chairs, strategically positioned on the venue lawn.

PARKING

Ample free parking is located at & around the venue.





FROM THE STAGE



CARY DIWALI FESTIVAL

Getting to Koka Booth Amphitheatre

Koka Booth Amphitheatre is located in Cary, NC; adjacent to Raleigh, the North Carolina State Capitol. It is easily accessible from I-40 and US-1.

Raleigh—16 mins

Durham—24 mins

Chapel Hill—30 mins

Fayetteville—1 hr 10

mins Wilmington—2

hrs Greensboro—1 hr

10 mins Charlotte—2

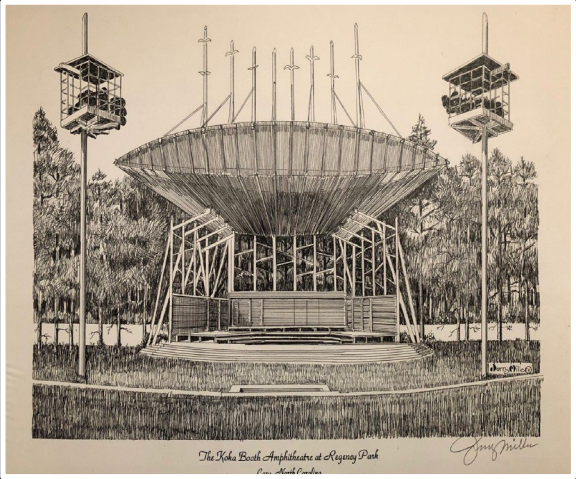
hrs 25 mins



A large firework with many red and white streaks is exploding in the night sky above the Koka Booth Amphitheatre. The amphitheatre has a large, flat, white roof and is surrounded by trees. Two tall, thin towers with platforms are visible on either side of the stage. The scene is illuminated by the firework and the lights of the amphitheatre.

4th of July Celebrations at Koka Booth Amphitheatre

HISTORY OF OUR VENUE



Venue was commissioned and plans finalized in 1998.



North Carolina Symphony stage in the early days.



Rock and Roll Hall of Fame Benefit Concert
2008



Lumineers
2013



Chris Stapleton
2016



Kacy Musgraves
2019



Turnpike Troubadours
2023



Mt. Joy
2024

2025 KOKA BOOTH AMPHITHEATRE CELEBRATES 25 SEASONS!





BOOKING:
Jamie Curtis
Jamie@boothamp.com